

TIMELINE

SPRING/SUMMER 2021

Reshaping the Narrative

The Valentine Studio Project will engage the wider community through programs, discussions and more.

1

Breathing Places

Opening May 5, this new exhibition explores Richmond's beautiful (and complicated) history with green spaces.

4

A New Neighborhood Spot

Welcome Ms. Bee's Juice Bar & Café to the Valentine Garden!

4



the
Valentine



Reshaping the Narrative: The Valentine Studio and Lost Cause Mythology

In 1871, Richmond sculptor Edward V. Valentine (1838–1930) purchased a carriage house at 809½ East Leigh Street to use as his sculpture studio. In that space, he created works depicting Confederate leaders as well as racist caricatures of Black Richmonders. These sculptures supported the harmful Lost Cause myth, which romanticized the South before the Civil War, obscured slavery as its cause, idolized the Confederacy and celebrated policies that upheld white supremacy. Valentine bequeathed his collection to the museum, and, in 1937, Richmond City Public Schools moved the studio to the Valentine Museum's garden.

Although the Valentine Studio has served many functions since 1937, it currently houses an exhibit on Edward Valentine that opened in 2003. The space closed along with the rest of the museum in March 2020 due to the pandemic. That June, inspired by calls from the community for institutions to provide an unvarnished history of Richmond's past, the Valentine chose not to reopen the space to the public, opting instead to reimagine and reinterpret it. Last summer, the Valentine hired a diverse committee of local historians and community leaders to facilitate creating a new vision for the space. They developed and conducted a community survey and hosted focus groups to garner



(A) Edward Valentine Sculpture Studio, 2020, the Valentine (B) Sculpture tools, Christina K. Vida, 2020, the Valentine (C) Ramp-ant Fun, 1981, Masaaki Okada, V.85.37.3767, Richmond Times-Dispatch Photograph Collection, the Valentine

a deeper understanding of the variety of opinions about the Lost Cause, the role of cultural institutions in sharing this history and the potential installation of the damaged, paint-covered Jefferson Davis statue, a work by Edward Valentine that protestors pulled down last summer.

The reimagined Valentine Studio will provide access to properly contextualized works, along with primary sources. Contiguous to the Studio, a covered pavilion over a portion of the Valentine Garden will provide additional room for hands-on activities, programming and visitor engagement. In addition to the Valentine’s ongoing programs related to monuments and the Jim Crow era, we intend to take these discussions beyond the museum itself, extending conversations across the city. New programming, developed in collaboration with local and regional partners, will begin later this year while exhibit design and development on the Studio continues. The Valentine will continue to collect feedback from the community throughout this process, conduct research about the museum’s own history of promoting Lost Cause narratives and collaboratively envision how we can provide Richmonders with a space to gain a deeper, more nuanced and more empathetic understanding of the region we call home.

*Christina K. Vida
Elise H. Wright Curator
of General Collections*

MEMBERSHIP & ANNUAL GIVING UPDATE

In an unpredictable year of highs and lows, we’re incredibly grateful for our new and steadfast annual supporters. Through your annual giving donations and memberships, we can continue to fulfill the Valentine’s timeless mission to collect, interpret and share our city’s complex and evolving history.

Take the plunge and solidify your support today. We’ve enclosed an envelope to make it easy. We also accept gifts of stock or IRA distributions, or you can make a gift online by visiting thevalentine.org/give.

Thank you for supporting Richmond Stories!

If you have any questions about giving, please contact Haley McLaren, Director of Advancement, at (804) 649-0711 ext. 325 or hmclaren@thevalentine.org.



EXHIBITIONS

New Exhibition!



Breathing Places: Parks & Recreation in Richmond

May 5, 2021–Jan 20, 2022

Breathing Places: Parks & Recreation in Richmond explores the design, use and change of Richmond's carefully crafted parks, recreation areas and natural spaces and their effect on the region's residents today.

Currently on View



Edith Shelton's Richmond Revisited

Through Sept 6, 2021

Following the Valentine's popular 2015 exhibition, explore mid-20th Century Richmond neighborhoods through a new selection of imagery by amateur photographer Edith Shelton.



Voices from Richmond's Hidden Epidemic

Through May 31, 2021

Richmond's rate of HIV infection is exacerbated by high concentrations of poverty, lack of sex education in public schools and the continuing opioid epidemic. Featuring oral histories collected by Laura Browder and Patricia Herrera with accompanying photographic portraits by Michael Simon, *Voices from Richmond's Hidden Epidemic* offers a nuanced look at the HIV/AIDS crisis through the stories of survivors, caregivers, activists and health care workers on the front lines.

Ongoing Exhibitions



This is Richmond, Virginia

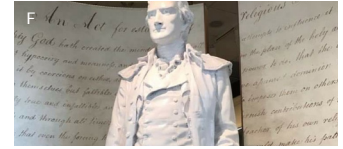
Ongoing in the Main Gallery

Explore Richmond's complex history and diverse stories through five themes: Why the fall line? Where do we live? What do we produce? Who has a voice? What do we value?



Wickham House

A National Historic Landmark built in 1812, this historic home allows us to tell the complicated story of the Wickham family, sharing spaces, the realities of urban slavery and more. Physically distanced, self-guided visits of the first floor of the Wickham House are now available as well as ongoing virtual tours at thevalentine.org.



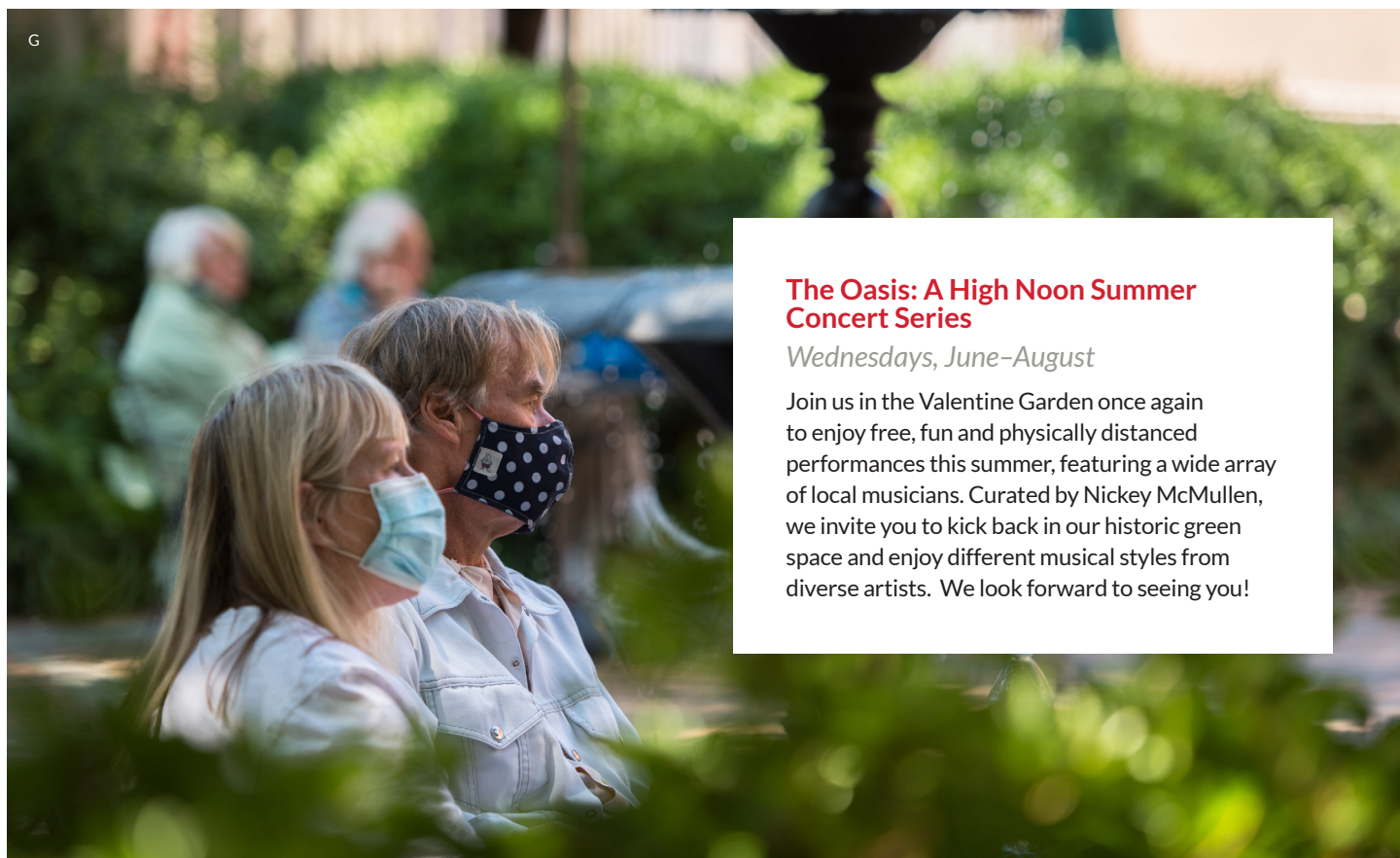
The Valentine First Freedom Center

S. 14th and E. Cary Streets
Open Tuesday–Sunday
10 a.m.–5 p.m.

The Valentine First Freedom Center is located on the same corner where the General Assembly met in secret during the American Revolution. Drafted by Thomas Jefferson and enacted in 1786, the Virginia Statute for Religious Freedom paved the way for the first Amendment to the U.S. Constitution and continues to impact how Virginians and the nation view freedom of conscience today. **Free and open to the public.**

(A) Entrance to Hollywood Cemetery postcard, ca. 1905, Valentine Museum Collection, V.2019.04.621 (B) Ridley's fish wagon, Rochkind's Luncheonette and viaduct for the Richmond-Ashland Car Line, 800 block W. Leigh Street, Carver, August 1956, Edith K. Shelton, Gift of Mrs. Edgar Fisher, Jr., V.91.42.1448 (C) Rodney Lofton, August 2018. Photographed by Michael Simon for the *Voices from Richmond's Hidden Epidemic* project (D) *This is Richmond, Virginia*, the Valentine (E) The Wickham House, the Valentine (F) Interior of the Valentine First Freedom Center, the Valentine (G) Visitors watching musical performance in the Valentine Garden, Steven Casanova, 2020, the Valentine (H) *This is Richmond, Virginia*, Steven Casanova, 2018, the Valentine

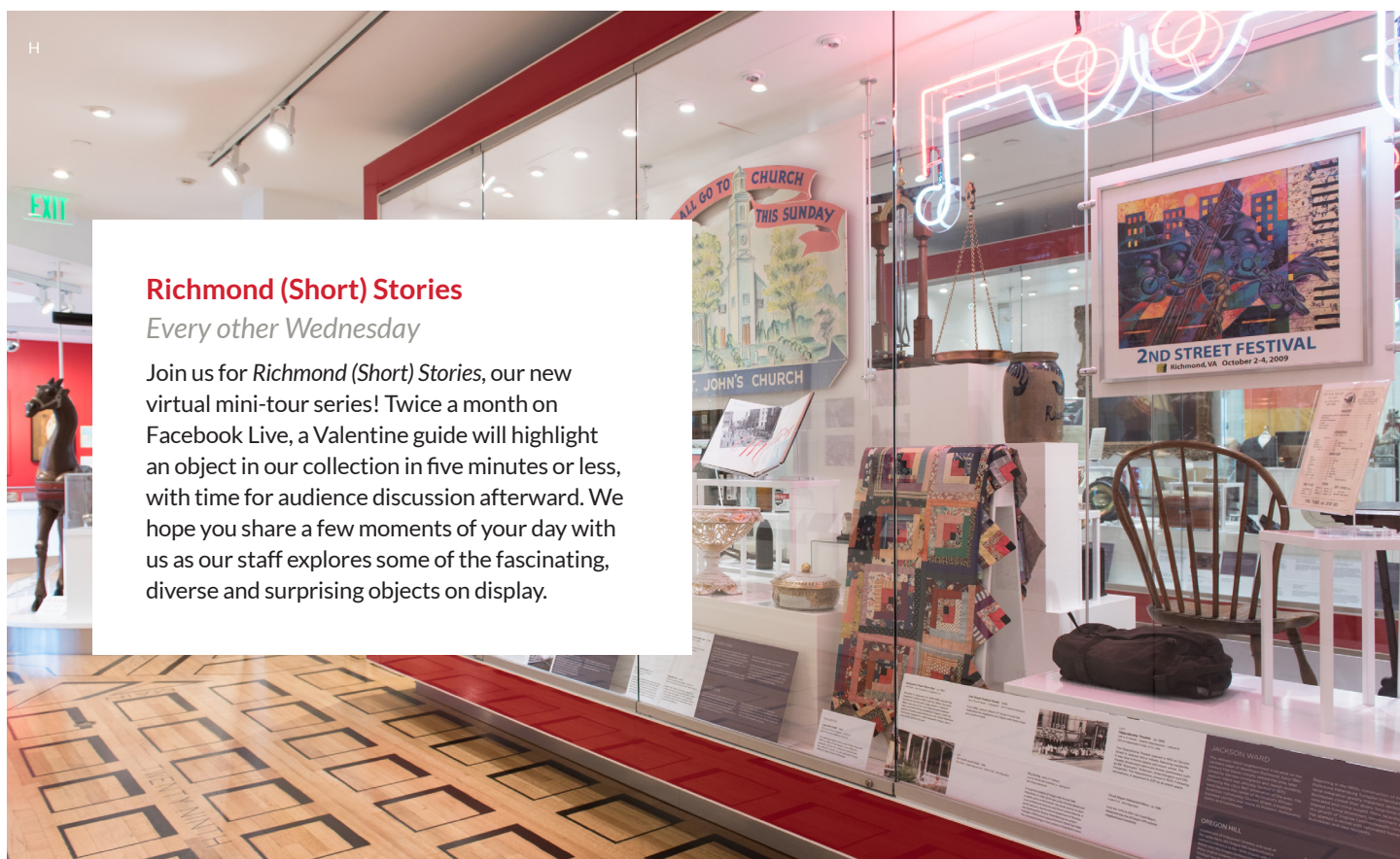
Programs and Events



The Oasis: A High Noon Summer Concert Series

Wednesdays, June–August

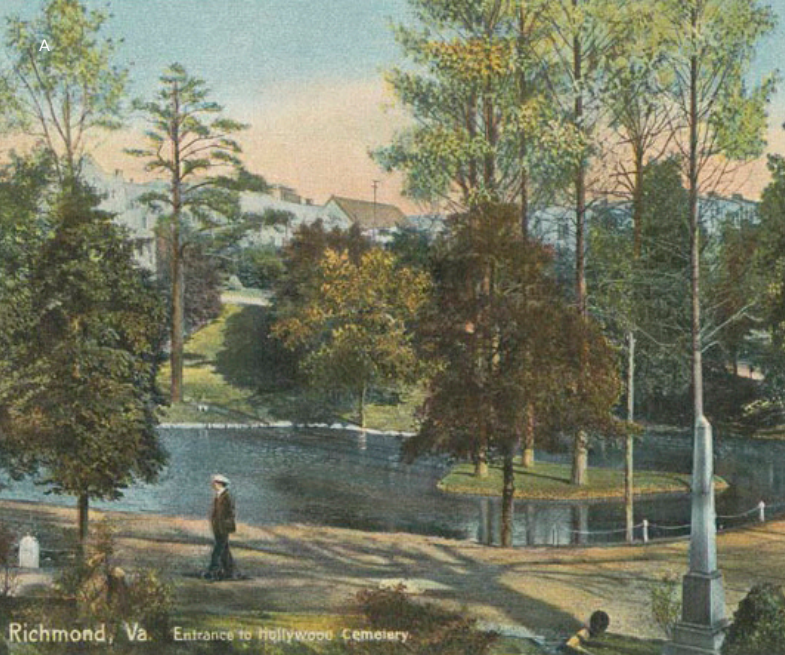
Join us in the Valentine Garden once again to enjoy free, fun and physically distanced performances this summer, featuring a wide array of local musicians. Curated by Nickey McMullen, we invite you to kick back in our historic green space and enjoy different musical styles from diverse artists. We look forward to seeing you!



Richmond (Short) Stories

Every other Wednesday

Join us for *Richmond (Short) Stories*, our new virtual mini-tour series! Twice a month on Facebook Live, a Valentine guide will highlight an object in our collection in five minutes or less, with time for audience discussion afterward. We hope you share a few moments of your day with us as our staff explores some of the fascinating, diverse and surprising objects on display.



Breathing Places: Parks & Recreation in Richmond

In 1851, Richmond’s Committee on Public Squares acknowledged the region’s rapid growth and recommended “securing breathing places in the midst of the city or convenient to it.” Our upcoming exhibition *Breathing Places: Parks & Recreation in Richmond* opens May 5 and will explore the design, use and evolution of the city’s “breathing spaces” over the last 170 years.

The city and surrounding counties have secured land and engineered and maintained such spaces for some of the region’s residents while limiting and denying access to others. Moreover, the policies that created inequitable access to green areas had consequences that still echo through our community today. *Breathing Places* will uncover this history of inequality in these coveted spaces while spotlighting Richmond residents, municipalities, non-profits and volunteer organizations that are working to grow new breathing places that are accessible to all residents.

As we gear up for *Breathing Places: Parks & Recreation in Richmond*, we’re also excited to feature original images from fellow Richmonders! On our website, you can find instructions on how to submit your favorite image of you, your family or your friends enjoying a green space in the Richmond region. We look forward to including these community-submitted images in a slideshow within the exhibition!

Christina K. Vida
Elise H. Wright Curator of General Collections

(A) Entrance to Hollywood Cemetery postcard, ca. 1905, Valentine Museum Collection, V.2019.04.621 (B) The Valentine Garden, Susan Shibut, 2021, the Valentine (C) The Valentine Museum Store, 2020, the Valentine (D) Wickham House Front Entrance from Clay Street, Christina Vida, 2021, the Valentine (E) Couple in the Valentine Garden, Ward Photography

Ms. Bee’s Juice Bar & Café at the Valentine!



We are excited to welcome Ms. Bee’s Juice Bar & Café, the winner of The Main Course: a Valentine Restaurant Competition, to the Valentine Garden! Ms. Bee’s opened her doors to the public on April 5, providing the Court End neighborhood with a brand new spot focused on providing nutritious, refreshing and creative foods and juices (and a bright, welcoming new mural!)

We are thrilled to have Brandi Battle-Brown, owner and entrepreneur, taking over the café space in the Valentine Garden, and we are so thankful for our amazing partners in this endeavor, including the Metropolitan Business League, the Richmond Black Restaurant Experience and Hatch Kitchen RVA.

Make sure to stop by during the week, 8 a.m. to 4 p.m., to enjoy an item from Brandi’s specially tailored menu in our blooming downtown green space. See you soon!

Eric Steigleder
Director of Communications

Education & Engagement



As we look towards the arrival of the Spring and Summer programming seasons at the Valentine, we are eagerly planning both new and returning programs to connect you with Richmond history.

With the arrival of warmer weather, we welcome you to join us for limited, in-person events as we take advantage of the Valentine’s beautiful garden oasis in a physically distanced manner. Keep an eye out on the Valentine’s calendar (thevalentine.org/events) and social media for announcements about upcoming Spring and Summer events, like our returning summer concert series, a new garden conversation series, walking tours and more.

And not to worry—our popular virtual programming is not going anywhere! We will continue to offer weekly virtual museum tours and programs, as well as new video and self-guided tour experiences, so that no matter where you are, there is always a way to engage with the Valentine.

Liz Reilly-Brown
E. Claiborne Robins, Jr. Director of Education & Engagement

Support the Valentine Store Online!



Check out the Valentine Museum Store's most popular items, now available for purchase online! Shop select Richmond products online or browse a collection of curated gift bundles in the Richmond Gift Catalog

virtual flipbook, all from the comfort of your own home. You can have your purchase thoughtfully gift-wrapped and delivered or prepared for pickup at the Valentine quickly and easily.

To accompany our current photography exhibit, *Edith Shelton's Richmond Revisited*, as well as other upcoming exhibitions, the Museum Store features great new books, T-shirts and other exhibition-related items. With a store dedicated to supporting a wide range of local businesses and creating unique Richmond product using the Valentine's very own collection, you can be sure you are shopping amazing merchandise while actively contributing to the museum's future sustainability and success.

Brianna Landes
Valentine Museum Store Manager

Stepping Stones



In 1969, the Valentine Museum replaced the old stone steps and handrails of the Wickham House's Clay Street entrance. Over the decades, ice freezing and thawing cracked and damaged the steps. Beneath these steps are two brick vaults that extend under the sidewalk. These underground spaces likely gave the Wickhams additional storage, and later housed coal and a boiler. During routine maintenance we noticed

the deterioration of the steps and saw that the porch was in danger of collapsing.

Thanks to generous support from the Jeanann Gray Dunlap Foundation, Windsor Foundation and Peachtree House Foundation, the Valentine Museum engaged Glavé & Holmes to design new steps with steel bracings. In 2020, contractor Peter Post ordered Indiana limestone blocks shipped to Vermont, where masons carefully replicated the look of the original steps. In early 2021, stonemasons replaced the old steps, added structural support and installed new handrails. The new steps are now safe, secure and ready for another century of service on Clay Street.

Christina K. Vida
Elise H. Wright Curator of General Collections

Start Your Story With Us!

The Valentine Garden is the perfect downtown oasis for your wedding, graduation celebration, milestone birthday party, business gathering or other special event! And now is the perfect time to celebrate as the weather warms and our garden blooms.

The Valentine is conveniently located in the heart of downtown, with indoor and outdoor accommodations suitable for any occasion. Whether you're marking a special anniversary or celebrating a recent accomplishment, there's nothing more magical than a night under the stars and a walk through our exhibition galleries to cap off a uniquely Richmond experience.

For more information about facility rentals and what we can offer, please contact Facility Rental Manager Peggy Hudert at phudert@thevalentine.org or (804) 649-0711 ext. 349.

Eric Steigleder
Director of Communications



The Valentine

1015 E. Clay Street, Richmond, VA 23219

thevalentine.org

Non-Profit Org.
U.S. Postage
PAID
Richmond, VA
Permit No. 974

2021 Richmond History Makers & Community Update

We would like to thank everyone who took part in the virtual 2021 Richmond History Makers & Community Update!

Although we couldn't come together in person, we were able to recognize our honorees, celebrate their accomplishments and remind ourselves that for all the challenges we face during this historic moment, our community is filled with individuals and organizations dedicated to improving lives across the Richmond Region.

Thank you to our title sponsor Dominion Energy and other sponsors, co-host the Community Foundation for a greater Richmond, Leadership Metro Richmond, Eventfull and the virtual attendees and supporters who made this event possible. We look forward to celebrating in person next year!

Front Cover: (A) Steven Casanova, 2020, the Valentine (B) Ms. Bee's Juice Bar & Café Mural, Jason Ford, 2021 (C) Charles Nicholson and Agnes Wilder, Walter Wright and Berthel Wilder, Curtis Lipscomb and Ruth Cumbo, ca. 1950, V.88.49.18, Fisher Photograph Collection, the Valentine (D) Susan Shibut, 2021, the Valentine

Back Cover: (A) 2021 Honoree Hamilton Glass and family, 2021, the Valentine



RICHMOND STORIES™

Connect with us on social media!
[@TheValentineVA](https://www.instagram.com/TheValentineVA)