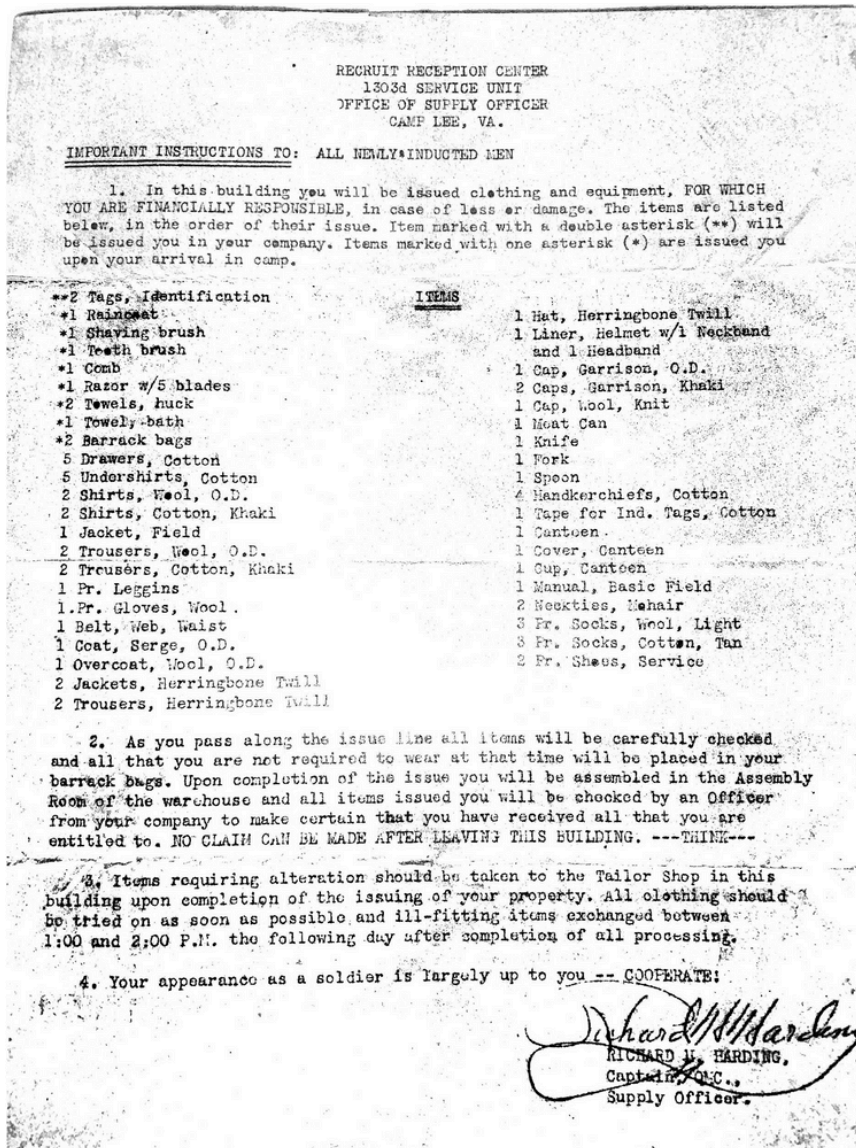


# Camp Lee: Military in Richmond Region

## Camp Lee Supply Letter to Enlisted Men, 1941



ERA  
WWII

THEMES  
Homefront during WWII,  
Military

CITATIONS  
Supply Letter from Camp Lee,  
1941, X.46.01.27, The Valentine

ESSENTIAL QUESTIONS

- How did the military prepare enlisted men to become soldiers?
- What items are essential when going to war?

### CONTEXT

Camp Lee was established during World War I in Petersburg, Virginia, initially serving as a mobilization center and later as a training camp for soldiers. In 1941, it housed the Quartermaster Replacement Training Center, the Quartermaster School, and the Women's Army Corps Training Center. Quartermasters in the U.S. Army are responsible for providing shelter, rations, and supplies to troops. Over the course of World War II, more than 300,000 soldiers passed through Camp Lee before deploying to the European and Pacific theaters. In 1950, the installation was renamed Fort Lee, and in 2023, it was again renamed Fort Gregg-Adams, honoring General Arthur Gregg and Lieutenant General Marvin Adams.

DISCOVER  
RICHMOND STORIES

For more stories visit [thevalentine.org](http://thevalentine.org) or email [education@thevalentine.org](mailto:education@thevalentine.org)



RECRUIT RECEPTION CENTER  
1303d SERVICE UNIT  
OFFICE OF SUPPLY OFFICER  
CAMP LEE, VA.

IMPORTANT INSTRUCTIONS TO: ALL NEWLY INDUCTED MEN

1. In this building you will be issued clothing and equipment, FOR WHICH YOU ARE FINANCIALLY RESPONSIBLE, in case of loss or damage. The items are listed below, in the order of their issue. Item marked with a double asterisk (\*\*) will be issued you in your company. Items marked with one asterisk (\*) are issued you upon your arrival in camp.

	<u>ITEMS</u>	
**2 Tags, Identification		1 Hat, Herringbone Twill
*1 Raincoat		1 Liner, Helmet w/1 Neckband and 1 Headband
*1 Shaving brush		1 Cap, Garrison, O.D.
*1 Teeth brush		2 Caps, Garrison, Khaki
*1 Comb		1 Cap, Wool, Knit
*1 Razor w/5 blades		1 Meat Can
*2 Towels, huck		1 Knife
*1 Towel, bath		1 Fork
*2 Barrack bags		1 Spoon
5 Drawers, Cotton		4 Handkerchiefs, Cotton
5 Undershirts, Cotton		1 Tape for Ind. Tags, Cotton
2 Shirts, Wool, O.D.		1 Canteen
2 Shirts, Cotton, Khaki		1 Cover, Canteen
1 Jacket, Field		1 Cup, Canteen
2 Trousers, Wool, O.D.		1 Manual, Basic Field
2 Trousers, Cotton, Khaki		2 Neckties, Mahair
1 Pr. Leggins		3 Pr. Socks, Wool, Light
1 Pr. Gloves, Wool		3 Pr. Socks, Cotton, Tan
1 Belt, Web, Waist		2 Pr. Shoes, Service
1 Coat, Serge, O.D.		
1 Overcoat, Wool, O.D.		
2 Jackets, Herringbone Twill		
2 Trousers, Herringbone Twill		

2. As you pass along the issue line all items will be carefully checked and all that you are not required to wear at that time will be placed in your barrack bags. Upon completion of the issue you will be assembled in the Assembly Room of the warehouse and all items issued you will be checked by an Officer from your company to make certain that you have received all that you are entitled to. NO CLAIM CAN BE MADE AFTER LEAVING THIS BUILDING. ---THINK---

3. Items requiring alteration should be taken to the Tailor Shop in this building upon completion of the issuing of your property. All clothing should be tried on as soon as possible and ill-fitting items exchanged between 1:00 and 2:00 P.M. the following day after completion of all processing.

4. Your appearance as a soldier is largely up to you -- COOPERATE!

  
RICHARD H. HARDING,  
Captain, O.S.C.,  
Supply Officer.

Recruit Reception Center  
1303d Service Unit  
Office of Supply Officer  
Camp Lee, Virginia

IMPORTANT INSTRUCTIONS TO: ALL NEWLY INDUCTED MEN

1. In this building you will be issued clothing and equipment, FOR WHICH YOU ARE FINANCIALLY RESPONSIBLE, in case of loss or damage. The items listed below in the order of their issue. Item marked with a double asterisk (\*\*) will be issued in your company. Items marked with one asterisk (\*) are issued you upon your arrival in camp.

**Tags, Identification	1 Hat, Herringbone Twill
*1 Raincoat	1 Liner, Helmet w/1 Neckband and 1 Headband
*1 Shaving brush	1 Cap, Garrison, O.D.
*1 Tooth brush	2 Caps, Garrison, Khaki
*1 Comb	1 Cap, Wool, Knit
*1 Razor with 5 blades	1 Moat can
*2 Towels, huck	1 Knife
*1 Towel, bath	1 Fork
*2 Barrack bags	1 Spoon
5 Drawers, Cotton	4 Handkerchiefs, Cotton
5 Undershirts, Cotton	1 Tape for Ind., Tags, Cotton
2 shirts, Wool, O.D.	1 Canteen
2 Shirts, Cotton, Khaki	1 Cover, Canteen
1 Pr. Leggins	1 Cup, Canteen
1 pr. Gloves, Wool	1 Manual, Basic Field
1 Belt, web, Waist	2 Neckties, Mohair
1 Coat, Serge, O.D.	3 Pr. Socks, Wool, Light
1 Overcoat, Wool, O.D.	3 Pr. Socks, Cotton, Tan
2 Jackets, Herringbone Twill	2 Pr. Shoes, Service
2 Trousers, Herringbone Twill	

2. As you pass along the issue line all items will be carefully checked and all that you are not required to wear at that time will be placed in your barrack bags. Upon completion of the issue you will be assembled in the Assembly Room of your warehouse and all items issued to you will be checked by an officer from your company to make certain that you have received all that you are entitled to. NO CLAIM CAN BE MADE AFTER LEAVING THIS BUILDING.----THINK---

3. Items requiring alteration should be taken to the Tailor Shop in this building upon completion of the issuing of your property. All clothing should be tried on as soon as possible and ill-fitting items exchanged between 1:00 and 2:00 P.M. the following day after completion of all processing.

4. Your appearance as a soldier is largely up to you -- COOPERATE:

Richard H. Harding,  
Captain, QMC  
Supply Officer

