

Fancy

**COSTUMES, CHARACTERS,
AND THE RICHMOND MASQUE**

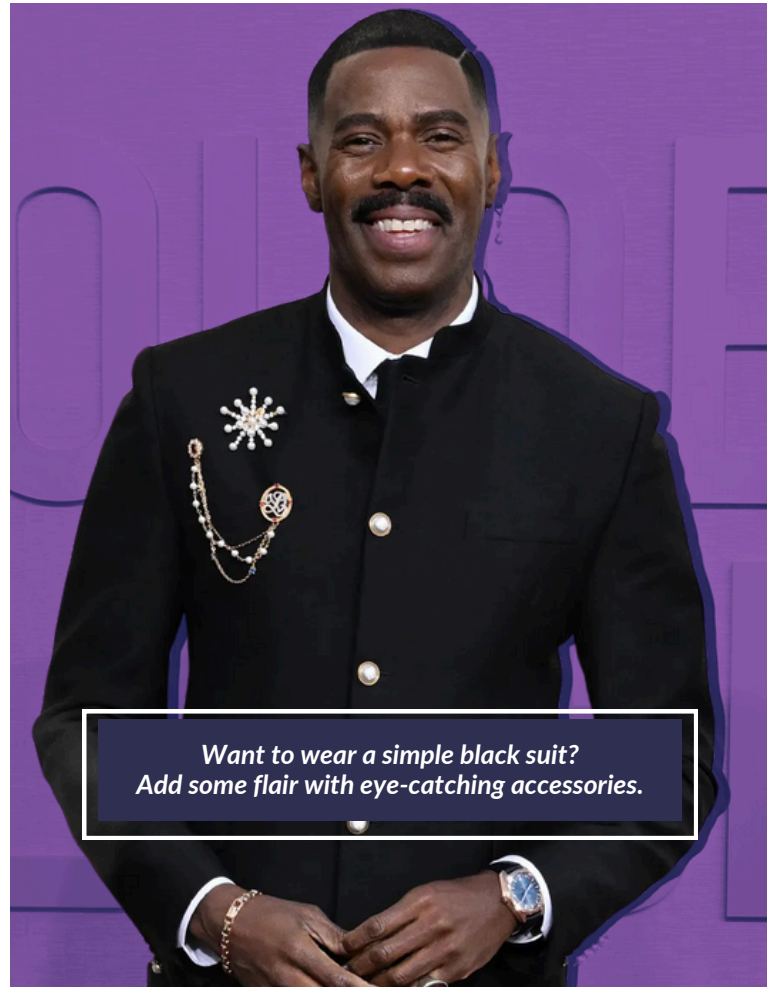
SUGGESTED ATTIRE

Come in a costume inspired by the exhibition which highlights:
Performance, Fancy Dress Parties, Festivals & Community, and Politics.

Alternatively, come dressed in **Creative Cocktail** attire and celebrate your distinctive style with unique prints and fabrics, interesting silhouettes and eye-catching accessories.



Experiment with a unique silhouette.



*Want to wear a simple black suit?
Add some flair with eye-catching accessories.*



Wear a suit featuring a fun pattern or material!

CREATIVE COCKTAIL



*Channel Tom Wolfe's iconic style with
a white suit!*



Pay homage to Richmond's classical dance organizations like the Richmond Ballet.



Pull together a group costume celebrating your favorite musical.

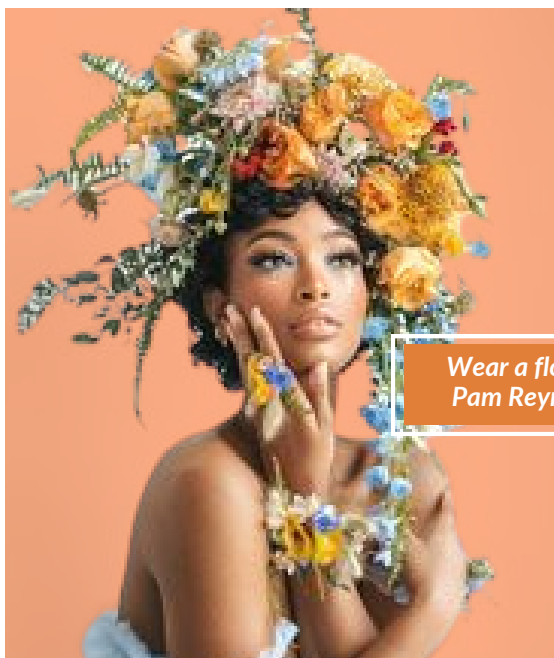


PERFORMANCE

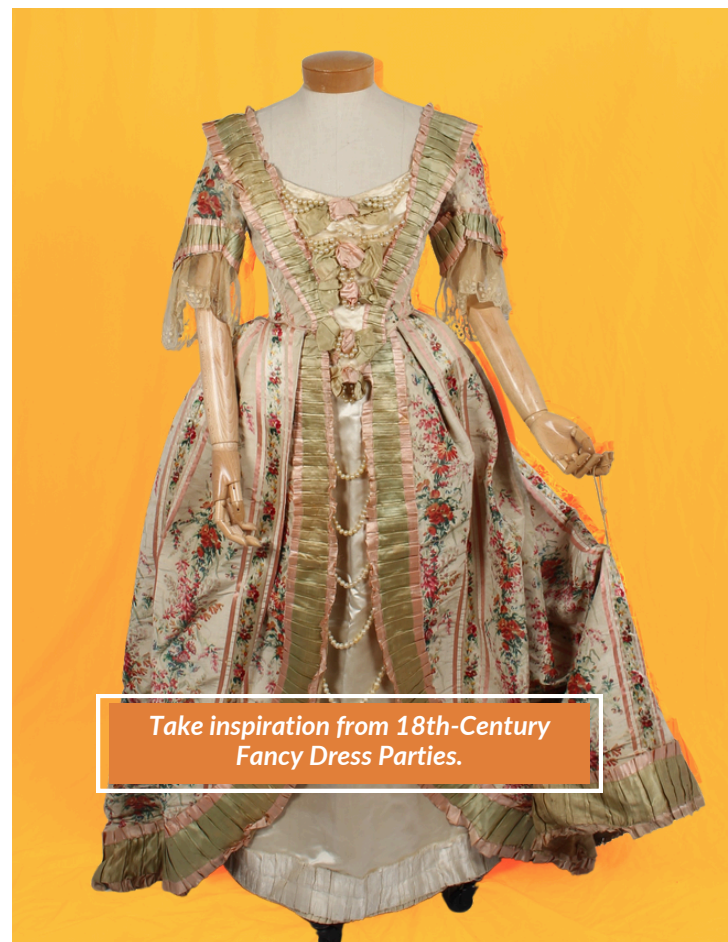


Get inspired by iconic Richmond metal band GWAR





Wear a floral headpiece inspired by Pam Reynolds' Faberge Ball outfit.

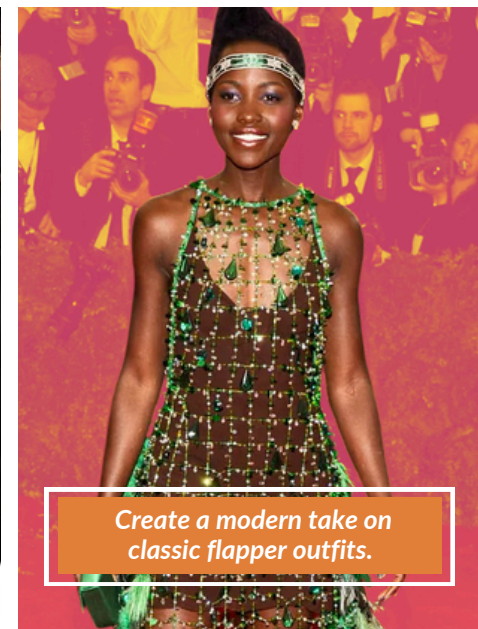


Take inspiration from 18th-Century Fancy Dress Parties.

FANCY DRESS PARTIES



Add a fancy flourish to your outfit with a masquerade mask!



Create a modern take on classic flapper outfits.



Channel the Richmond Carnival where in 1900 Henry Lee Valentine was crowned "King Rex" inspired by New Orleans traditions.



Harken back to Richmond festivals of the past like the National Tobacco Festival where attendants wore outfits like this.

COMMUNITY & FESTIVALS



Celebrate Easter-like traditions with an outfit inspired by Easter parades and festivals.



